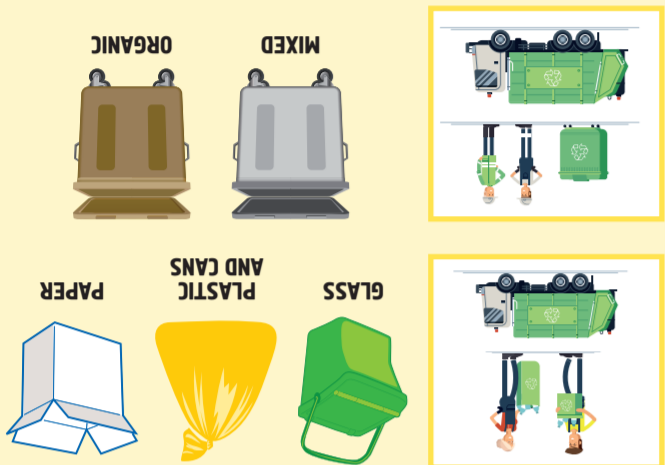


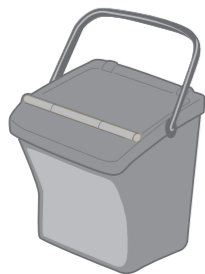
DOOR TO DOOR COLLECTION SYSTEM

All domestic fractions are home collected



MIXED SYSTEM
Glass, Paper, and Plastic & cans, Organic and Mixed must be disposed of in roadside dumpsters

MIXED



You need a special card to open the dumpsters. Please, ask the town hall to receive this card



If the waste is not correctly separated, it won't be collected and the gatherers will put a sticker on it, to alert about the mistake. You should solve the problem and expose the waste again, the next time



You should expose the garbage from 20:00 p.m. of the previous day, until 6:00 a.m. of the day of the collection. For knowing the schedule of collection, please check on the calendar on our website www.differenzaincomune.it

HOW TO DISPOSE URBAN WASTE FOR DOOR-TO-DOOR COLLECTION

YES

- Plastic-coated paper
- Plastic cutlery
- Sanitary napkins, nappies
- Object with mixed materials
- Dust
- DVD, CD
- Everything that is not recyclable

NO

- Drug
- Batteries
- Clothes
- Ink cartridge
- Spray can
- Flammable liquids
- Everything that is recyclable

HOW

Put the rubbish in any type of bags and put it in the bin

4 BE CAREFUL TO THE SELECTIVE COLLECTION: IT COUNTS!



It's important to separate municipal solid waste as much as you can and to reduce the generation of mixed fraction: each of these materials have their own characteristics and reuse/recycling/stabilization potential. This is fundamental to save the environment

3 THE CONTAINERS MUST BE FULL!



Put out the containers of waste when they are full. This is important especially for the container of mixed fraction because in the future the tax on waste will be calculated on the generation of mixed fraction (payment per container)

2 THE CONTAINERS MUST BE VISIBLE!



You should put out the containers in clearly visible places and accessible to garbage collectors, in order to facilitate their work

1 RESPECT THE TIMETABLE!



It is fundamental to respect the timetable of putting out the garbage: not later than 6 a.m. The route of garbage collectors starts at 6 a.m. and can change every week, therefore the hour of collection in your street is not always the same

THE RULES OF THE DOOR TO DOOR WASTE COLLECTION SYSTEM

#DIFFERENZA
IN COMUNE

www.differenzaincomune.it

contact center 0365.1985916

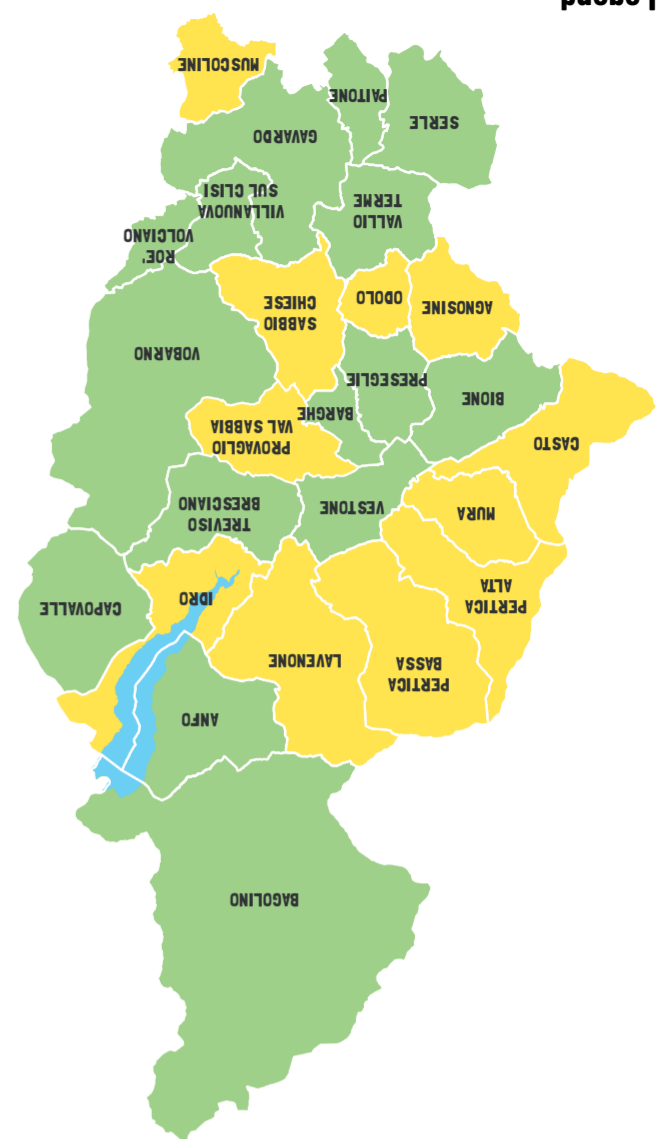
<https://www.facebook.com/differenzaincomune/>

www.riciclaro.it



Municipalities with door-to-door collection system

Municipalities with mixed system



TWO SYSTEMS OF SEPARATE COLLECTION OF URBAN WASTE

WHO ARE YOU TAKING OUT, TONIGHT?



Guide to the separate collection of urban waste

#DIFFERENZA
IN COMUNE

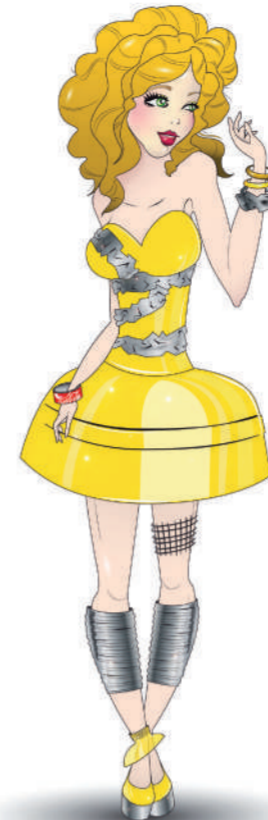
ORGANIC



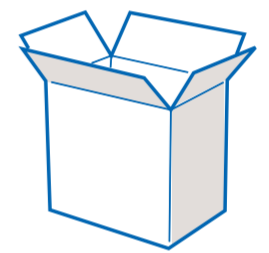
GLASS



PLASTIC PACKAGING AND CANS



PAPER



YES

- Leftovers food
- Rotten food
- Tea Bags, coffee powder
- small quantity of vegetable waste (e.g. flowers and prunings)
- Peel, stone, core of fruits
- Corks
- Paper handkerchieves
- Wood ash

NO

- Vegetable oil
- Hair and body hair
- Synthetic animal litters
- Cigarette butt
- Sanitary napkins, nappies, even if they are biodegradable
- Dust
- Stones

HOW

Organic waste should be inserted in biodegradable or paper bags (no plastic bags) and put in the bin

YES

- Glass bottles;
- Glass cans

NO

- Porcelain, ceramic
- Mirrors,
- Light bulbs
- Display
- Window glass
- Headlight

HOW

It is not necessary to detach the labels and to rinse the packaging. They should just be empty.

Please, remove caps.

The “glass waste” should be inserted in the bin without any bag

YES

- Plastic bottle;
- Plastic plates, plastic cups;
- Plastic film
- Polystyrene
- Aluminium packaging
- Crown cap
- All the packaging with the symbols: PET, PP, PE
- All the packaging with the symbols: AL, ACC

NO

- Toys
- DVD, CD
- Photographs, celluloid
- Slippers, shoes
- Hard plastic objects
- Cables

HOW

Packaging should be crushed to reduce their size. It is not necessary to rinse the packaging, they should just be empty. The “plastic and cans waste” should be inserted in the official yellow bags, not in whichever bag

YES

- Newspaper, magazines, posters, notebooks...
- Cardboard boxes
- Cardboard packaging
- Tetrapak
- Clean paper bag

NO

- Photographs
- Paper handkerchieves
- Dirty paper
- Sales receipt
- Plastic-coated paper

HOW

Packaging should be crushed to reduce their size. Tetrapak and others paper packaging should be rinsed.

The “Paper waste” should be inserted in any kind of paper bag or in cardboard boxes